

UNIFORM



Tights- Theatrical Pink Shoes

Theatrical Pink- Leather



K-YR 1 Full Sole

YR 2 & Above Split Sole

Preferred shoe is Capezio refer to exam required sections for style. Bloch or Dance Direct is fine for class.

**Please note new shoes are required for exams/awards and you will be notified of what brand and style to purchase.*

RAD Uniform

Students can wear the old RAD uniform until they have purchased the new one. We would love everyone in uniform by Week 6 Term 1.

***Please see details specific to your child's grade below.**

New Students can wear their own ballet inspired outfits or black activewear until they are ready to purchase uniform

All items can be purchased from Bloch and we have a privilege program with Bloch Bondi & Miranda to assist families with a discount.

This new uniform will be continued into the future at C5.

BLOCH

K-YR 1 RAD

Uniform

From Bloch- All Black

R51012G Bloch Sparkle Girls
Tank Tutu Dress



Optional Extras

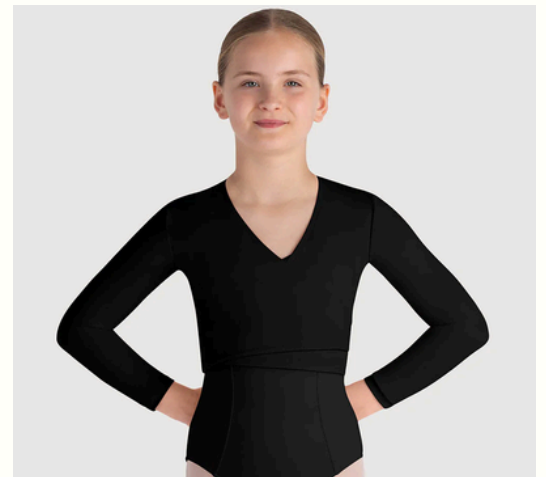
Hair(Black)- **30142** Haircomb Wide Satin Bows(Not the big bows)

Hair(Black)- **30091** Flower Ribbons Medium

OR Black scrunchy around sleek bun

For warmth

Z0858G Bloch Overture
Crossover Girls Long Sleeve
Wrap Top



Winter only for the first 15
minutes of class

Bloch Black Leg warmers-
High or Thigh High



YR 2-6 RAD

Uniform

From Bloch- All Black

L0856G Bloch Overture Oriana

Princess Seam Girls Leotard

No Skirt YR 2-6



Optional Extras

Hair(Black)- **30142** Haircomb Wide Satin Bows(Not the big bows)

Hair(Black)- **30091** Flower Ribbons Medium

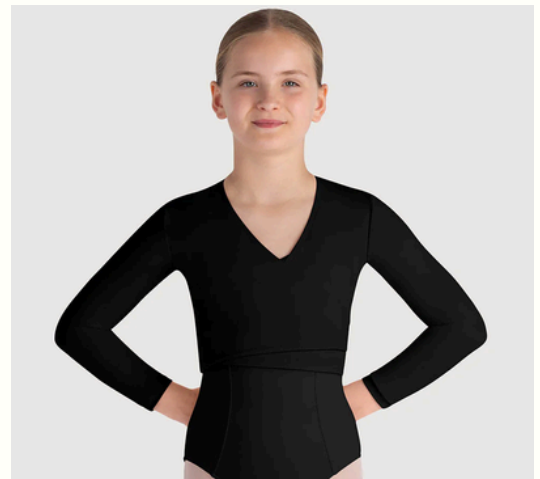
OR Black scrunchy around sleek bun

For warmth

Z0858G Bloch Overture

Crossover Girls Long Sleeve

Wrap Top



*Winter only for the first 15 minutes of class

Bloch Black Leg warmers-
High or Thigh High



YR 7+ RAD

Uniform

From Bloch- All Black

L3866SB Bloch Microlux™ Gayleena
Empire Gathered Front Wide Strap
Leotard

OR

L0854L Bloch Overture Obelia
Princess Seam Womens Leotard

Optional Extras

A55130 Bloch Professional Womens
Wrap Skirt(In Black)

Hair(Black)- **30091** Flower Ribbons Medium

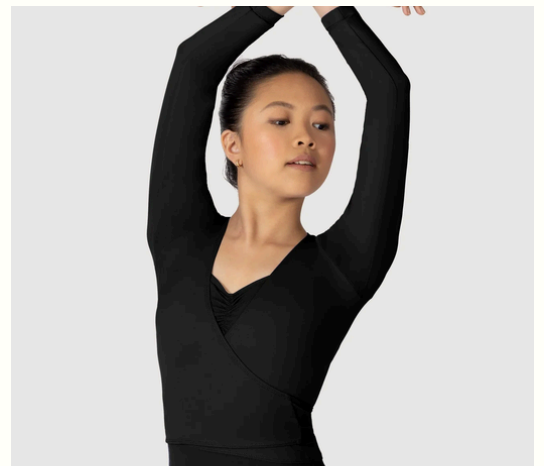
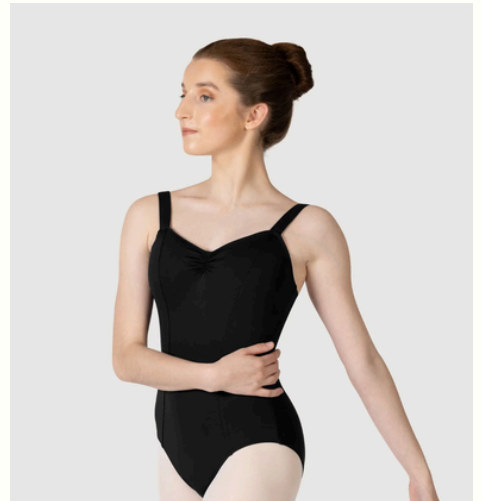
OR Black scrunchy around sleek bun

For warmth

Z0858L Bloch Overture
Crossover Womens Long
Sleeve Wrap Top

*Winter only for the first 15
minutes of class

Bloch Black Leg warmers-
High or Thigh High



RAD HAIR



WHAT YOU WILL NEED:

BRUSH OR COMB

HAIR ELASTICS

HAIRSPRAY, GEL OR WATER

HAIRPINS (BUN-PINS ARE BEST) AND BOBBY PINS

HAIR NET

1. BRUSH YOUR HAIR.

TO START, GET YOUR HAIR FREE OF TANGLES. THIS CAN BE ACCOMPLISHED WITH A HAIR BRUSH OR COMB BASED ON YOUR PERSONAL PREFERENCE. A LITTLE WATER CAN HELP TEXTURE YOUR HAIR AND MAKE IT MORE MANAGEABLE IF NEEDED.

2. PULL YOUR HAIR BACK INTO A PONYTAIL AND SECURE WITH AN ELASTIC.

A SECURE BUN STARTS WITH A SECURE PONYTAIL. BRUSH OR COMB YOUR HAIR BACK INTO A TIGHT PONYTAIL AND SECURE WITH AN ELASTIC. PLACE YOUR PONYTAIL ON YOUR HEAD WHERE YOU WANT YOUR BUN TO BE. TIP: A PONYTAIL AND BUN PLACED HIGHER TOWARDS THE CROWN ON YOUR HEAD WILL GIVE THE ILLUSION OF A LONGER NECK.

4. USE HAIRPINS TO SECURE THE BUN TO YOUR HEAD.

SECURE THE BUN TO YOUR HEAD USING HAIR PINS. TRY TO USE U-SHAPED PINS AND NOT BOBBY PINS, WHICH ARE DESIGNED TO PIN HAIR FLAT TO THE HEAD. USE EACH U-PIN TO GRAB HAIR FROM THE TOP OF YOUR BUN, THEN DIRECT THE PIN DOWN UNDER TO THE BASE OF THE BUN AND PUSH IT IN TO HOLD. KEEP USING PINS AROUND THE BUN TO SECURE AND TUCK LOOSE STRANDS INTO PLACE.

5. WRAP THE HAIR NET AROUND THE BUN AND SECURE WITH MORE PINS TO SECURE ALL THE LOOSE HAIRS.

COVER YOUR BUN WITH A HAIR NET THAT MATCHES YOUR HAIR COLOR TO KEEP ALL WISPS AND STRAY HAIRS IN PLACE. DEPENDING ON THE SIZE OF YOUR HAIR NET, WRAP THE HAIR NET AROUND YOUR BUN MULTIPLE TIMES TO THE SIZE YOUR BUN. USE A HAIR PIN TO SECURE IT IN PLACE.

6. USE HAIRSPRAY, GEL, OR BOBBY PINS / CLIPS TO TAME THE LOOSE HAIRS AWAY FROM YOUR FACE

FOR AN EXTRA HOLD AND OVERALL NEAT LOOK, USE HAIRSPRAY TO SLICK ALL THE LOOSE WISPS OR FIZZ FROM YOUR HAIRLINE FLAT ON THE HEAD. IF THERE ARE LARGER STRANDS OF HAIR THAT DOESN'T REACH THE BUN, USE BOBBY PINS OR HAIR CLIPS TO SECURE THEM FLAT ON THE HEAD.